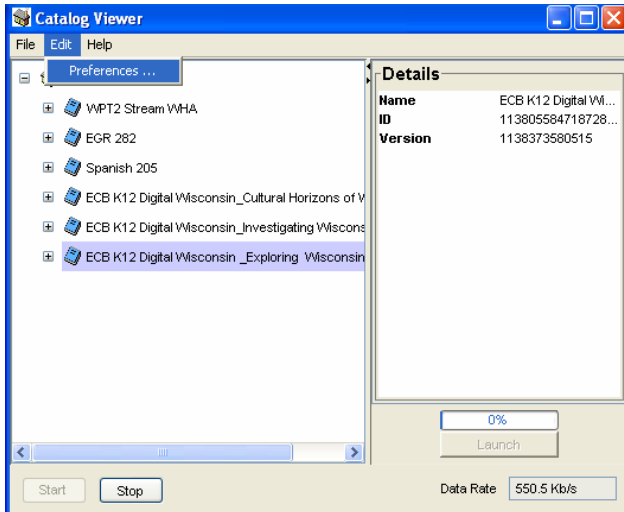
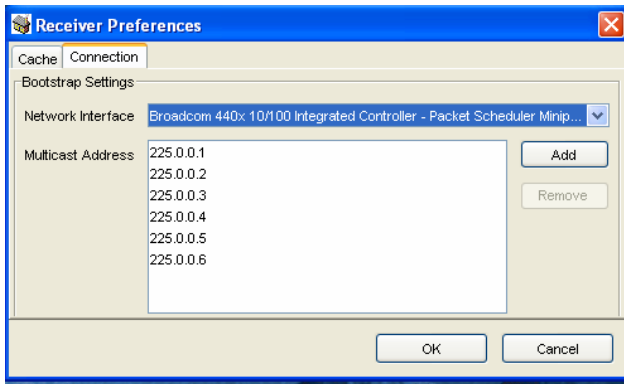


How to set the correct network interface for the datacast laptop.

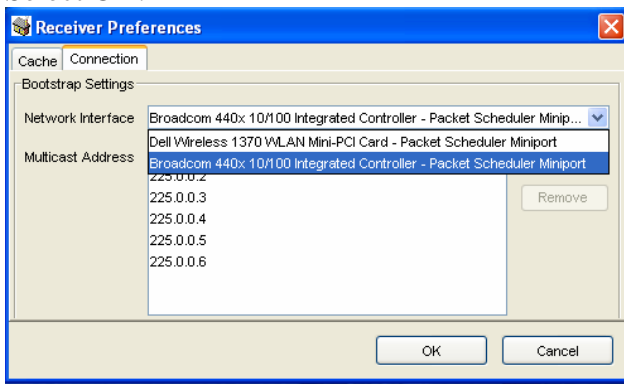
Select “Edit” then “Preferences.”



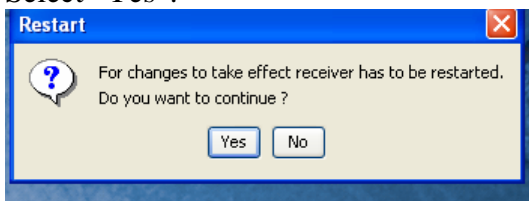
Select the “Connections” tab.



The Connections “Network Interface” should be “Broadcom 440x”. Select Broadcom 440x. Select OK.



Select "Yes".



Questions? Email Tina Hauser at hauser@wpt.org or telephone 608-262-6756.